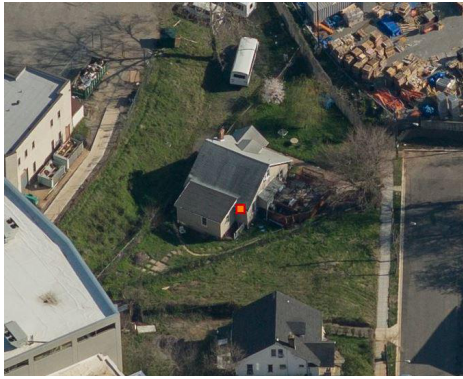
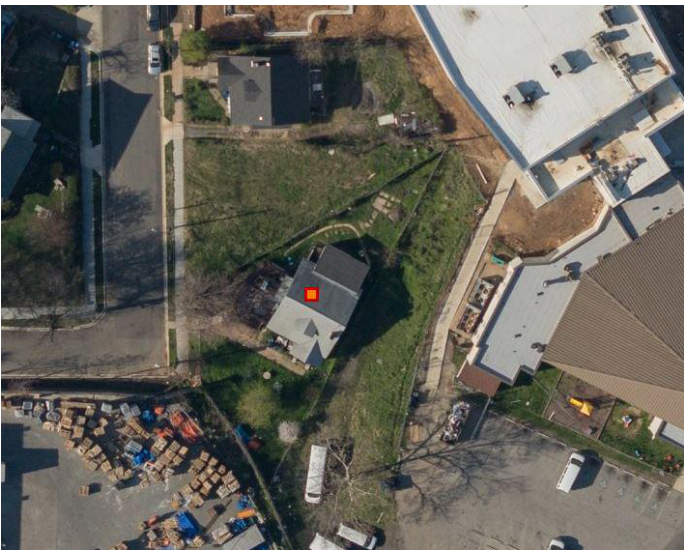


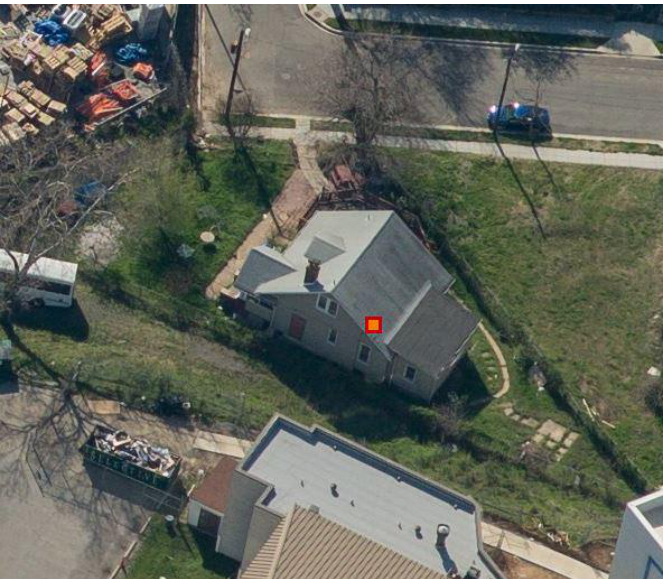
EXISTING FRONT VIEW



EXISTING VIEW FROM 12TH ST NE

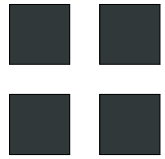


EXISTING VIEW FROM TOP



EXISTING VIEW FROM SOUTH

R. MICHAEL CROSS
DESIGN GROUP



BRG 12

SK02

Board of Zoning Adjustment
District of Columbia
CASE NO. 20759
EXHIBIT NO. 4

04/12/22
2401 12th ST
NE

EXISTING PHOTOS